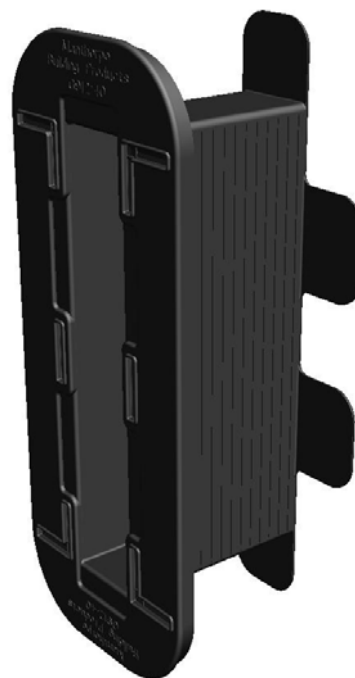
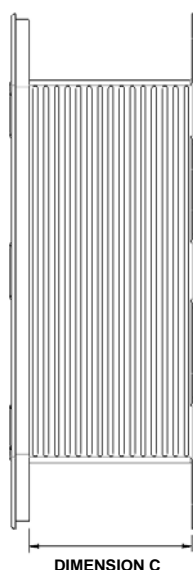
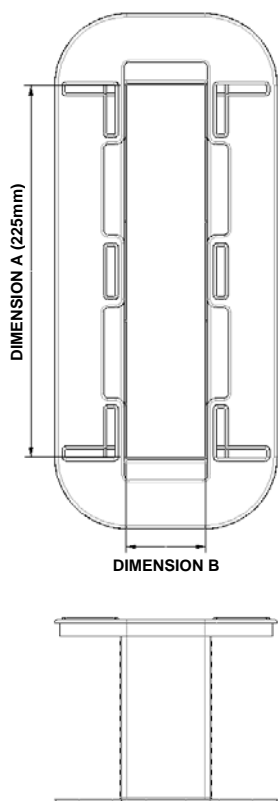


Joist Seal Description (Height of 225mm)

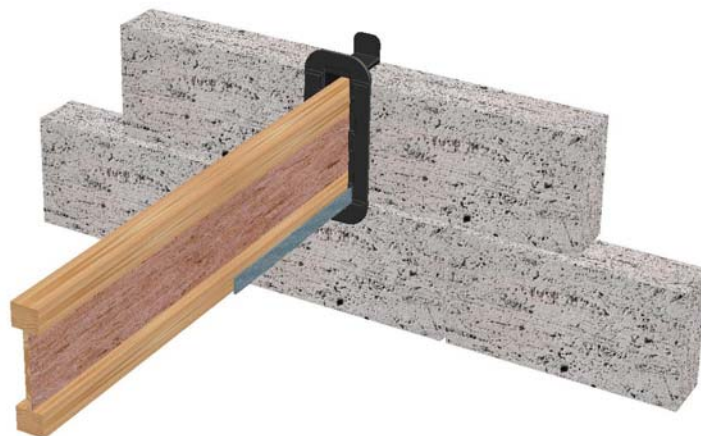
CODE **G912**



Description:

The G912 range is designed to solve the problems of air leakage associated with built in timber joists. The box is placed over the end of the joist and built into the inner leaf of the external wall construction. As the timber dries out and shrinks the seal is still maintained between the box and the masonry, thus preventing air leakage into the cavity.

Located around the inner flange is a number of push out pockets for the location of restraining straps as required.



References:

DOE: Building Regulations Part L

Robust Details, Part E: Resistance to the Passage of Sound. (Appendix A, Pages 2-3).

COLOUR	Translucent White
MATERIAL	Polypropylene
MANUFACTURING PROCESS	Injection Moulded

MANTHORPE BUILDING PRODUCTS LTD
MANTHORPE HOUSE
BRITAIN DRIVE
CODNOR GATE BUSINESS PARK
RIPLEY
DERBYSHIRE DE5 3ND

TEL: 01773 514 200
FAX: 01773 514 262
EMAIL: sales@manthorpe.co.uk
WEB: www.manthorpe.co.uk

DRN R.P

Date 26.8.04

The company maintains a policy of continuous development of its product range and reserves the right to amend the specification without notice.

DRG No

MBP 8212
Sheet 1 of 2

Issue

D

Joist Seal Product Code Selector (Height of 225mm)

CODE **G912**

The G912 Joist Seal accommodates both timber joists and I-beams with a maximum height of 225mm. For Joists that exceed this height the taller G913 Joist Seal can be used.

In order to match the correct joist seal to your specific requirements the following product code system is used: -

Product Code:

G91A-BB-CCC

A = Maximum Joist Height (either 225mm or 302mm)

B = Joist Width (mm)

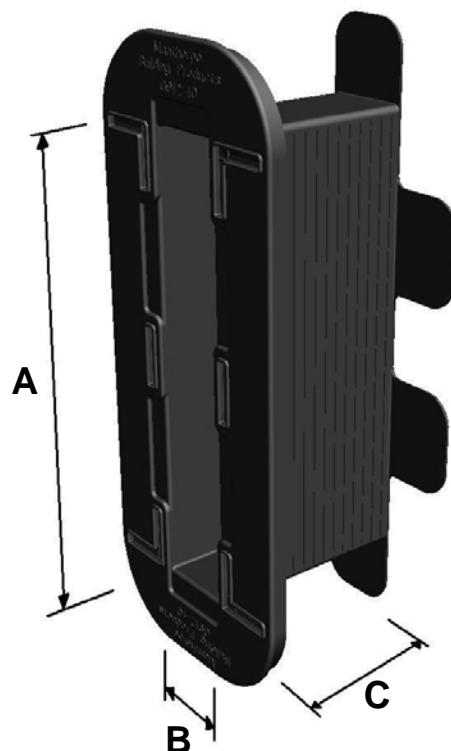
C = Depth of Blockwork (mm)

Example:

You are using a joist with a height of 225mm and a width of 48mm. This will be built into blockwork with a bed depth of 115mm.

You should use the following Joist Seal: -

Product Code: **G912-48-115**



Product Code Selector Chart:

		Blockwork Depth (Dimension C)				
		100mm Blockwork	115mm Blockwork	125mm Blockwork	130mm Blockwork	140mm Blockwork
Joist Width (Dimension B)	40mm	G912-40-100	G912-40-115	G912-40-125	G912-40-130	G912-40-140
	48mm	G912-48-100	G912-48-115	G912-48-125	G912-48-130	G912-48-140
	65mm	G912-65-100	G912-65-115	G912-65-125	G912-65-130	G912-65-140
	75mm	G912-75-100	G912-75-115	G912-75-125	G912-75-130	G912-75-140
	90mm	G912-90-100	G912-90-115	G912-90-125	G912-90-130	G912-90-140
	100mm	G912-100-100	G912-100-115	G912-100-125	G912-100-130	G912-100-140
	150mm	G912-150-100	G912-150-115	G912-150-125	G912-150-130	G912-150-140

*G912 = Height of 225mm (Dimension A)

MANTHORPE BUILDING PRODUCTS LTD
MANTHORPE HOUSE
BRITAIN DRIVE
CODNOR GATE BUSINESS PARK
RIPLEY
DERBYSHIRE DE5 3ND

TEL: 01773 514 200
FAX: 01773 514 262
EMAIL: sales@manthorpe.co.uk
WEB: www.manthorpe.co.uk

DRN R.P

Date 26.8.04

The company maintains a policy of continuous development of its product range and reserves the right to amend the specification without notice.

DRG No

MBP 8212
Sheet 2 of 2

Issue

D