

# Eximo Range - BS EN1125

PB801N

## Single Door Panic Bolt



### Application:

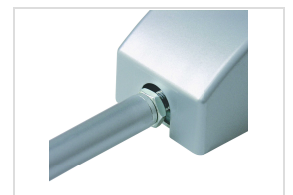
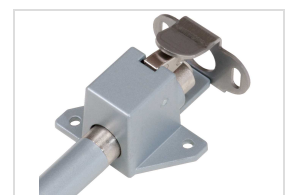
- For doors in buildings accessed by the public where panic can be foreseen
- Suitable for push face of outward opening doors
- May be used on double doors with non-rebated meeting stiles (2 x PB801N)
- Fixings to suit timber or metal doors

### Specification:

- **Ease of adjustment** in main unit by means of top and bottom adjustable locator units
- **Bottom rod unit already assembled** - no cutting required
- Rods already fitted with **round shoot bolts**
- **Spring loaded floor socket**
- **Non-handed** for maximum flexibility
- Anti-vandalism - **push bar retained in handles**
- Automatic top trip
- Downward pressure at any point on bar withdraws the bolts ensuring immediate release of door
- Top rod and push bar can be cut to size to suit door dimensions
- Bolt projection: 14mm
- Anti-thrust
- Complete with signage and pictorial fixing instructions
- Compatible with UNION OAD805N Outside Access Device
- Max. Door Leaf Width: 1300mm
- Max. Door Height: 2440mm
- Max. Door Leaf Mass: 200kg

### Finish:

- SIL - Silver (RAL 9006)



### Standards:

- CE marked to BS EN 1125 (CE mark not valid if door exceeds measurements given)
- Included in fire tests to BS EN 1634-1  

3	7	6	B	1	3	2	2	A	A
---	---	---	---	---	---	---	---	---	---
- Signage as required by BS EN 1125 annex A19, coloured green & white as detailed in BS 5499



# Eximo Range - BS EN1125

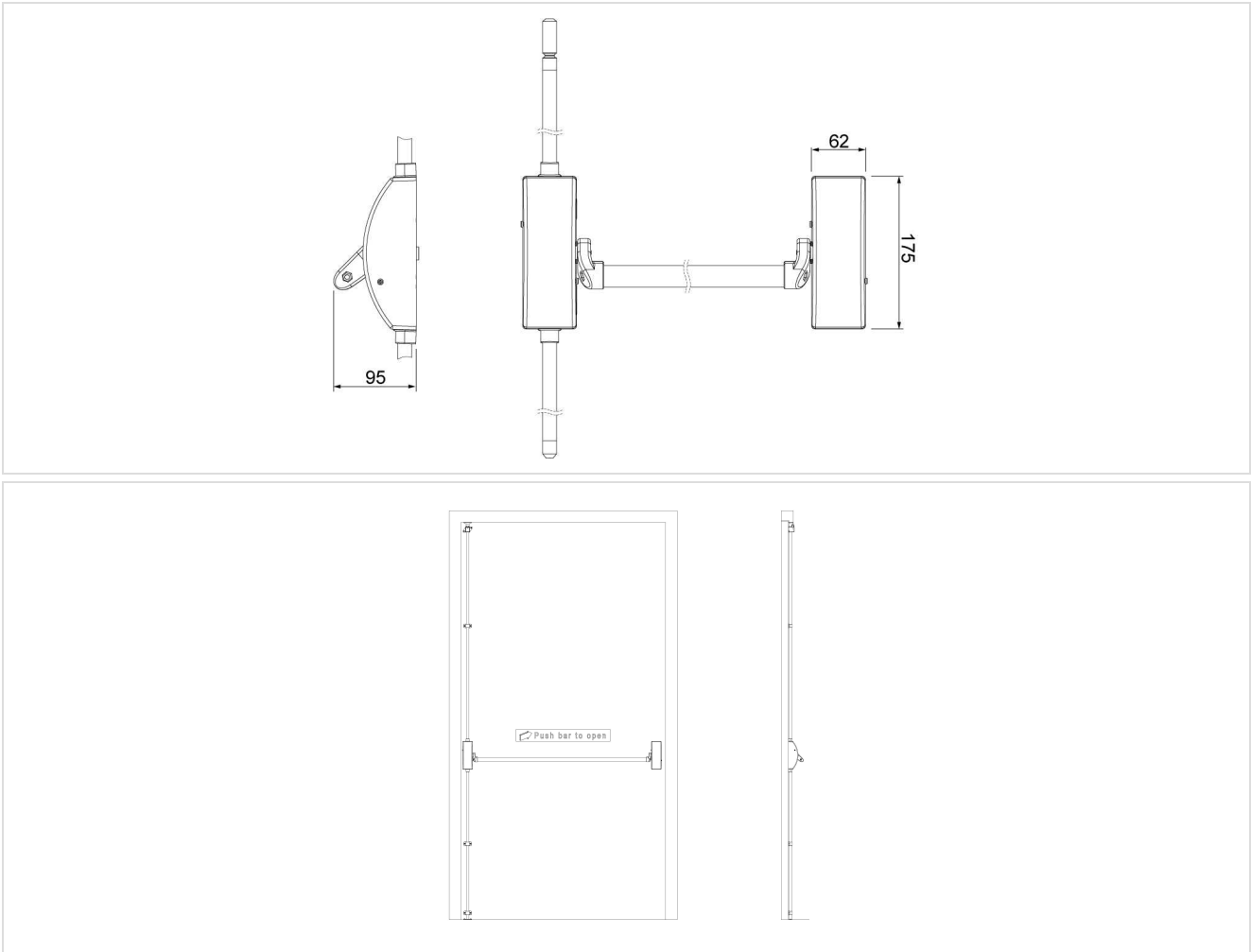
PB801N

## Single Door Panic Bolt



ASSA ABLOY

### Technical Design:



### Variants:

Code	Description
J-PB801N-SIL-W	Single Door Panic Bolt
J-PB801N-SIL-M	Single Door Panic Bolt