

Properties

- Supplied in 6 metre rolls
- No special fixings in use. No special installation techniques
- Easy to build as brickwork proceeds
- Easily cut with trowel or knife
- Lengths may be lapped with no loss of thermal efficiency



A complete and simple solution to thermal bridging where the cavity is closed. Combining advantages of expanded Polystyrene and Polyethylene DPC, Damcor is designed to prevent the problem of cold bridging around window and door openings in traditional cavity constructions. At these points in the structure, condensation with possible consequential staining and mould growth, can occur at the reveals due to the lack of insulation where the cavity is closed.

The product is simply placed in the cavity with the DPC overlap trapped between the window/door frame and the exterior brickwork. No special fixings or installation techniques are necessary. The product can be rolled or folded. It is easily cut with a knife or trowel, and can be lap-jointed with no loss of thermal efficiency. No material need ever be wasted.

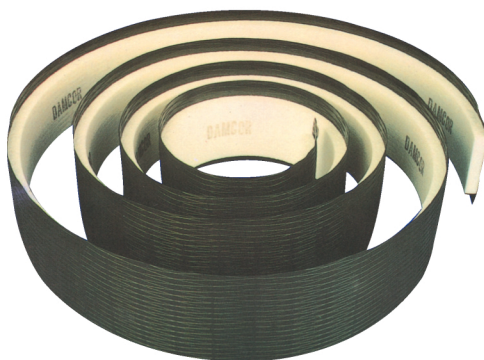
Product Details

Expanded Polystyrene to BS:3837:1986. Polyethylene DPC to BS 6515.

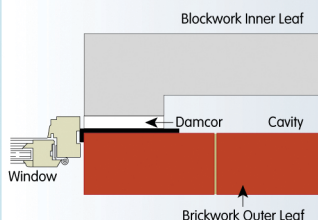
Supplied in 6 metre rolls. 165mm DPC x 100mm insulation (8 per pack) 225mm DPC x 150mm insulation (6 per pack).

Damcor can be manufactured to special order with DPC widths up to 800mm.

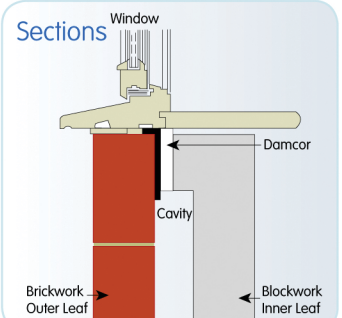
Damcor is positioned in cavity prior to installation of window frame. It can be built in as the brickwork proceeds. Where lap joints occur, a minimum of 100mm DPC is recommended, with EPS insulation strips tightly butted.



Plan



Sections



Polypipe TDI

Unit 3 Unity Complex Dale Rd North Darley Dale Matlock Derbyshire DE4 2HX

Tel: +44 (0) 1629 733177 Fax: +44 (0) 1629 732779

E-mail: tdi.sales@polypipe.com Website: www.polypipe.com