

# Breather Quilt

## 2 in 1 Breathable Multi-layer Insulation Blanket

Thermal insulation in a 40mm thin, flexible, multi-layer breathable membrane



*Insulation for roofs*

Technical Guide



**YBS** Insulation  
HIGH QUALITY PRODUCTS FOR THE BUILDING INDUSTRY

# Insulation for use in roofs

## Benefits

- **2 in 1 insulation & breather membrane**
- **Lightweight, thin & flexible**
- **Fast and simple installation**
- **Tear resistant**
- **For pitched roofs between 20° and 70°**

BreatherQuilt is a very flexible, easy to fit, breathable multi-layer insulation achieving a high thermal resistance.

## General fixing instructions

Installation of BreatherQuilt for pitched roof applications and additional insulation products should be in accordance with the manufacturers certificate, fixing instructions and current good building practice.

Start at the bottom of the roof by rolling BreatherQuilt across the rafters and staple in to place. Tape a line of double sided tape along the top edge of the material.

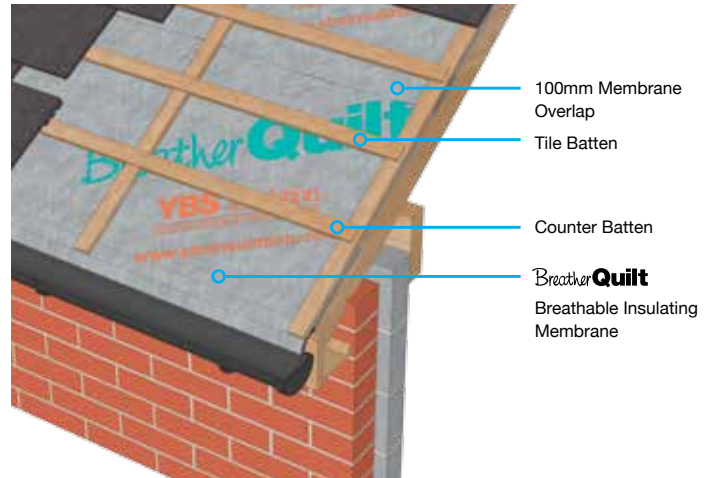
Install the next layer of BreatherQuilt using the 100mm membrane overlap. Staple as before then secure with the double sided tape, to cover the joint.

BreatherQuilt can be cut with craft knife or a sharp pair of scissors. Staple at regular intervals. Minimum 14mm stainless steel or galvanised staples are recommended.

No protective clothing/handling required.



## Installation Detail - Over rafter - Counter battened



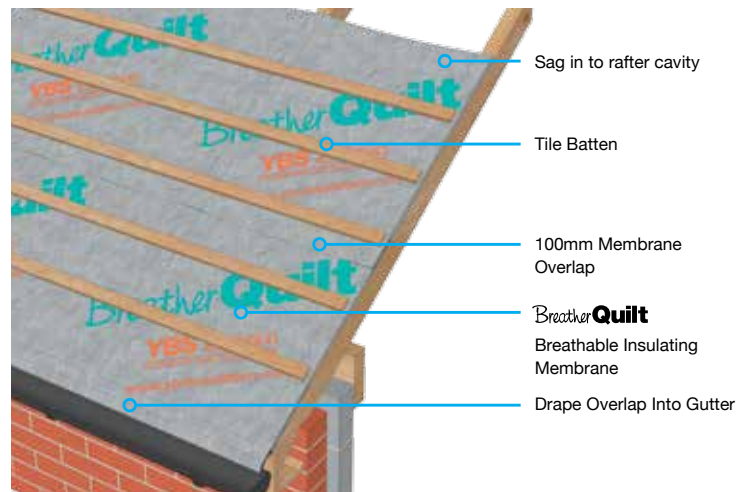
Starting at the edge of the roof and working horizontally, nail or staple BreatherQuilt to the first rafter using 14mm staples, pull taut and proceed across the roof.

At the eaves BreatherQuilt should extend onto a suitable eaves carrier.

Install 25mm battens parallel with the rafters.

Proceed with tile/slate battens and tile/slates.

## Installation without counter batten



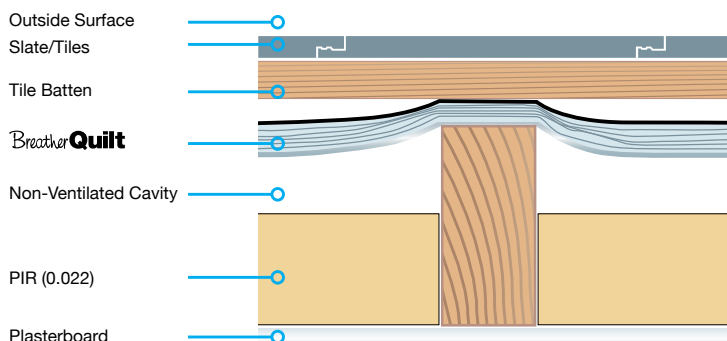
Starting at the edge of the roof and working horizontally, nail or staple BreatherQuilt to the first rafter using 14mm staples, BreatherQuilt should hang down between the rafters ensuring once tile battens are installed a clear 10mm drape is formed at the centre of all rafter spaces.

At the eaves BreatherQuilt should extend onto a suitable eaves carrier.

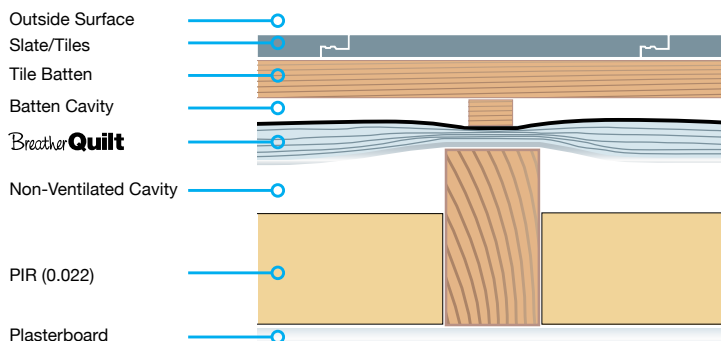
Proceed with tile/slate battens and tile/slates.

## New Build Pitch Roof 0.13

### Draped Detail



### Counter Batten Detail



#### U-value Table

Description (rafters at 400 centres)	U-Value
BreatherQuilt and 200mm PIR	0.13 W/m <sup>2</sup> k

#### U-Value Table

Description (rafters at 600 centres)	U-Value
BreatherQuilt and 170mm PIR	0.13 W/m <sup>2</sup> k

#### U-value Table

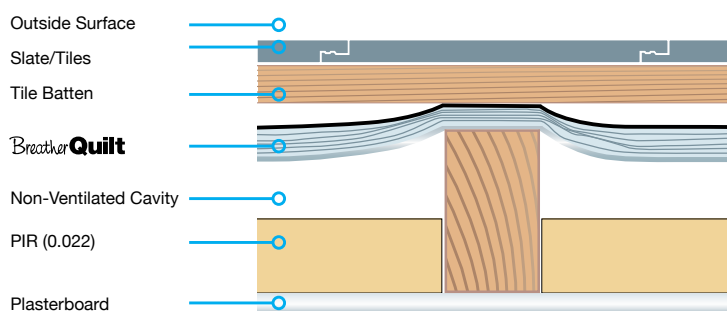
Description (rafters at 400 centres)	U-Value
BreatherQuilt and 200mm PIR	0.13 W/m <sup>2</sup> k

#### U-Value Table

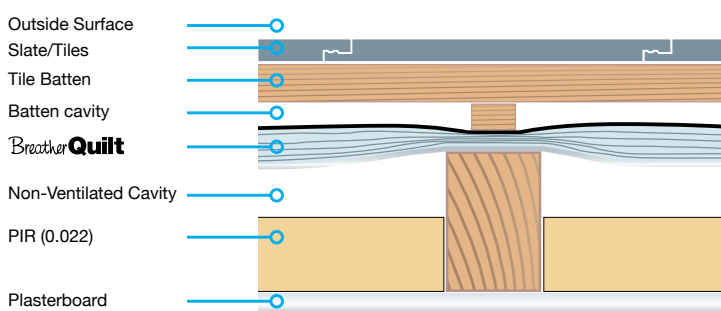
Description (rafters at 600 centres)	U-Value
BreatherQuilt and 175mm PIR	0.13 W/m <sup>2</sup> k

## Refurbishment Pitch Roof 0.18

### Draped Detail



### Counter Batten Detail



#### U-value Table

Description (rafters at 400 centres)	U-Value
BreatherQuilt	0.57 W/m <sup>2</sup> k
BreatherQuilt and 125mm PIR	0.18 W/m <sup>2</sup> k
BreatherQuilt and 175mm Mineral wool	0.18 W/m <sup>2</sup> k

#### U-Value Table

Description (rafters at 600 centres)	U-Value
BreatherQuilt	0.58 W/m <sup>2</sup> k
BreatherQuilt and 110mm PIR	0.18 W/m <sup>2</sup> k
BreatherQuilt and 160mm Mineral wool	0.18 W/m <sup>2</sup> k

#### U-value Table

Description (rafters at 400 centres)	U-Value
BreatherQuilt	0.61 W/m <sup>2</sup> k
BreatherQuilt and 130mm PIR	0.18 W/m <sup>2</sup> k
BreatherQuilt and 180mm Mineral wool	0.18 W/m <sup>2</sup> k

#### U-Value Table

Description (rafters at 600 centres)	U-Value
BreatherQuilt	0.61 W/m <sup>2</sup> k
BreatherQuilt and 115mm PIR	0.18 W/m <sup>2</sup> k
BreatherQuilt and 165mm Mineral wool	0.18 W/m <sup>2</sup> k

# Breather Quilt



## Technical Properties

Technical Properties		
<b>Product Description</b>		
11 Components		
Thickness	40mm approx.	
Weight	600g/m <sup>2</sup>	
<b>Mechanical Properties</b>	Value	Reference Standard
Thermal performance		
Core	1.00m <sup>2</sup> K/W	EN 16012
Core + 1 Airspaces	1.45m <sup>2</sup> K/W	EN 6946
Emission coefficients of surfaces	0.05	EN 16012
Tensile strength	142KPA	BS EN 1608
<b>Packaging</b>	<b>12m<sup>2</sup></b>	
Width	1.2m	
Length	10m	
Weight	7.5Kg	

**YBS** Insulation

HIGH QUALITY PRODUCTS FOR THE BUILDING INDUSTRY

Yorkshire Building Services (Whitwell) Ltd, Craggs Industrial Park, Morven Street, Creswell, Derbyshire, S80 4AJ

T: +44 (0) 844 99 100 44 F: +44 (0) 844 99 100 55

E: [sales@ybsinsulation.com](mailto:sales@ybsinsulation.com) W: [www.ybsinsulation.com](http://www.ybsinsulation.com)

© Yorkshire Building Services (whitwell) Ltd.